



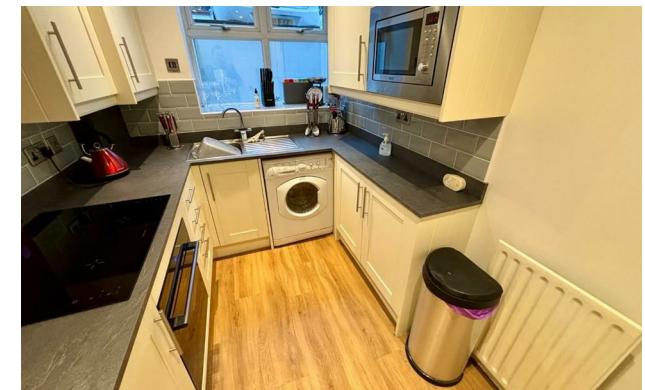
jordan fishwick

DIDSBURY
Barlow Moor Road



Barlow Moor Road, Didsbury, M20 2GJ

£220,000



The Property

A stylish, two double bedroom, two bathroom lower ground floor apartment forming part of an attractive Victorian conversion which is just a 'short stroll' from Didsbury Village. Presented to a high standard throughout and boasting both gas central heating and uPVC double glazing, the living space in outline comprises:- Private & communal entrance, entrance hall with cloaks space, good sized lounge/dining room, modern fitted kitchen with integrated appliances, two double bedrooms, with an en-suite shower room to the main, and a contemporary bathroom with white suite and chrome fittings. Externally, there are communal grounds, residents parking and also a single garage. *NO ONWARD CHAIN*

Directions

M20 2GJ



- Two double bedrooms
- Stylish Victorian conversion
- Didsbury Village location
- Double glazing
- Gas central heating
- Private & communal entrance
- Modern fitted kitchen
- Two bathrooms
- Garage and communal parking
- NO ONWARD CHAIN

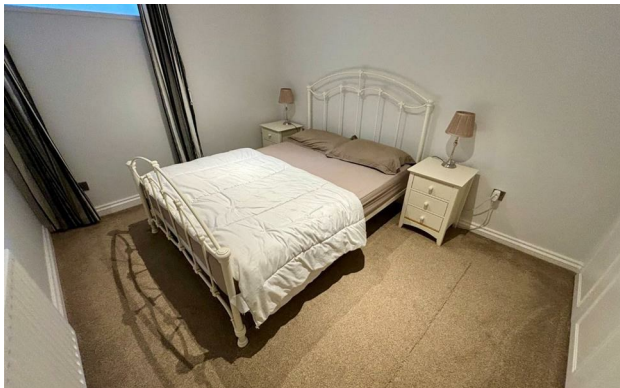
Postcode - M20 2GJ

EPC Rating - C

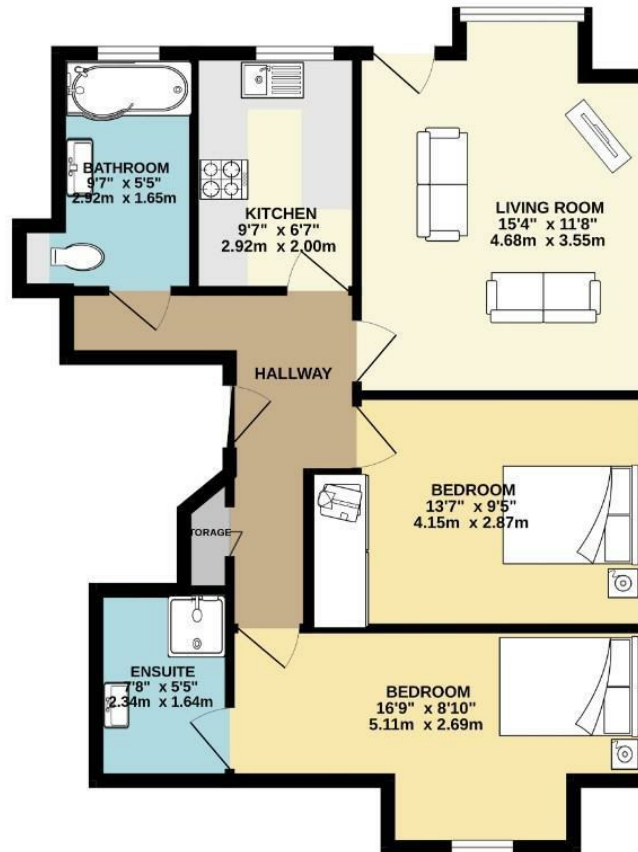
Floor Area - 654.00 sq ft

Local Authority - Manchester City Council

Council Tax - B



GROUND FLOOR
654 sq.ft. (60.8 sq.m.) approx.



TOTAL FLOOR AREA : 654 sq.ft. (60.8 sq.m.) approx.
Measurements are approximate. Not to scale. Illustrative purposes only.
Made with Metropix 5/2023



These particulars are believed to be accurate but they are not guaranteed and do not form a contract. Neither Jordan Fishwick nor the vendor or lessor accept any responsibility in respect of these particulars, which are not intended to be statements or representations of fact and any intending purchaser or lessee must satisfy himself by inspection or otherwise as to the correctness of each of the statements contained in these particulars. Any floorplans on this brochure are for illustrative purposes only and are not necessarily to scale.

Offices also at: Wilmslow, Macclesfield, Hale, Sale, Chorlton, Glossop, Manchester & Salford

757-759 Wilmslow Road, Didsbury Village, Manchester

0161 445 4480

didsbury@jordanfishwick.co.uk
www.jordanfishwick.co.uk